

How Preventive Maintenance Pays Off

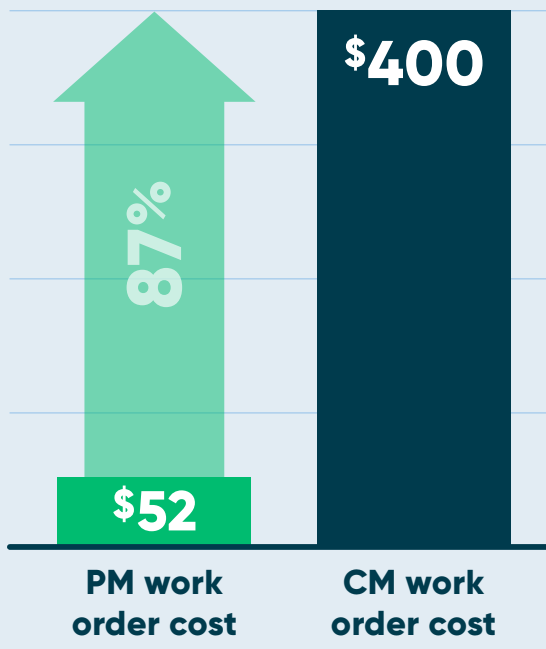
We all know that it pays to get ahead — but with maintenance and operations work, that can be tricky to achieve. The key to sustaining proactive operations is having a solid preventive maintenance (PM) program. This will help you significantly save on time and costs.



For an organization that uses a solid preventive maintenance program, they can:*

Reduce corrective work order hours

89% reduction in corrective work order hours over 3 years



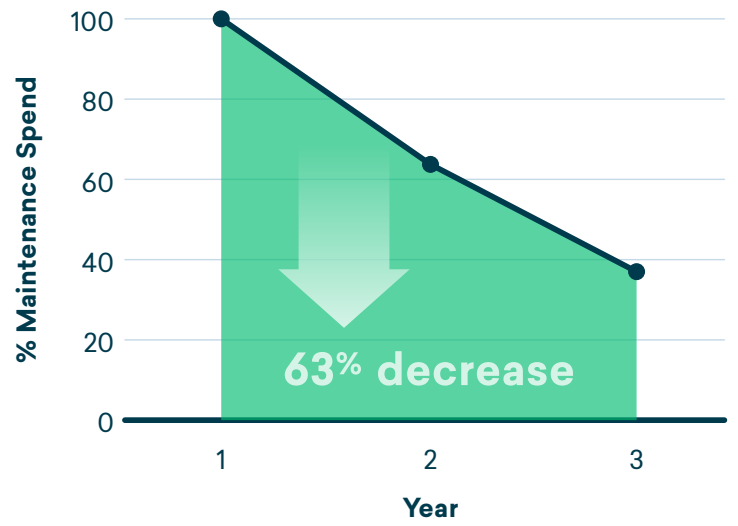
Save **\$26,343 annually** for every 1% increase in their PM/CM ratio

A corrective work order is **87% more costly** than a preventive one

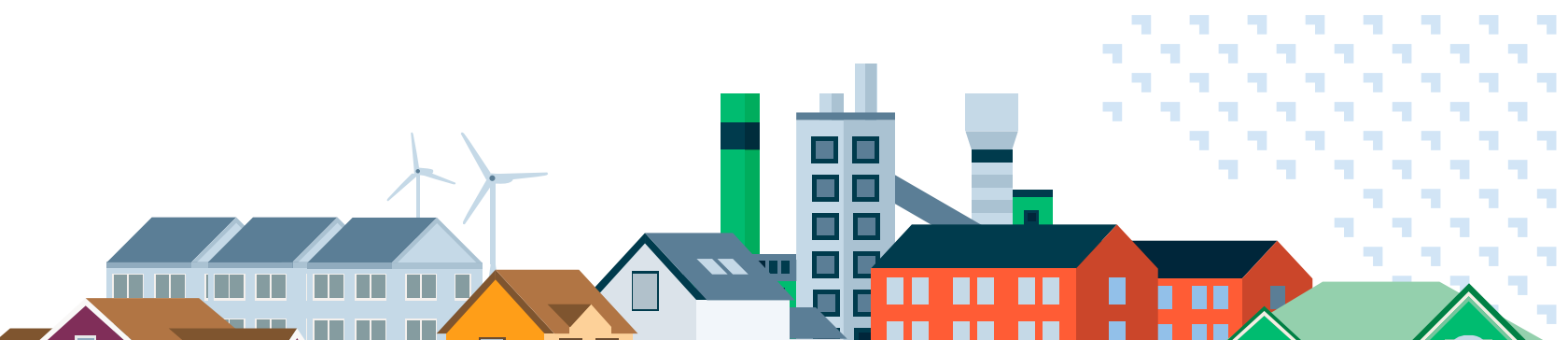
Average PM work order cost: **\$52**
Average CM work order cost: **\$400**

Save on overall maintenance spend

63% drop in maintenance spend over 3 years



Ready to take your PM to the next level and start seeing the payoff? Use our [Toolkit for Getting Ahead](#) or schedule time with one of our experts to get started.



SOURCES

* Data taken from a larger, multiple location **Asset Essentials™** client. Although the dollar amounts may be larger than your organization, the percentages will be true for all.